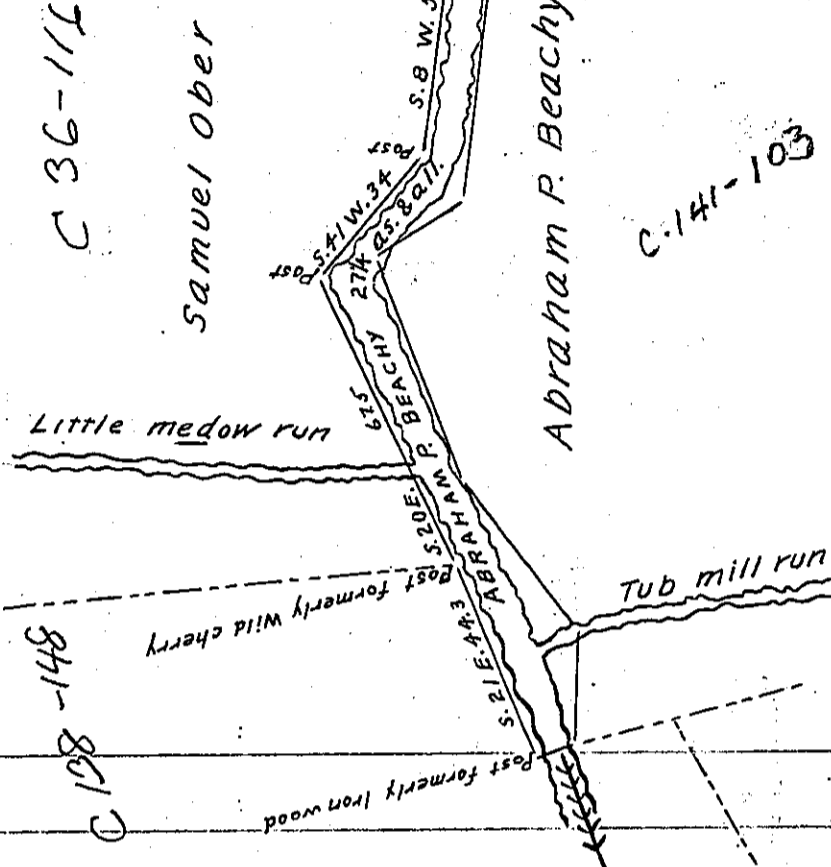


Courses & distances from  
Stones to Sugar are as follows  
N. 80 W. 26 ps. to Post  
S. 7 W. 12 " " Post  
S. 22 E. 20 " " Sugar



Courses & distances Down  
Casselmans river are as follows  
Beg. at Post N. 22 W. 27 Post  
N. 27 E. 21.4 Post  
N. 66 E. 18.4  
N. 33 E. 14.8 Post  
S. 76 E. 28 Post  
N. 7 E. 68 Post  
N. 57 E. 21  
N. 21 W. 52 Post  
N. 37 W. 40  
N. 1/2 E. 24 Post  
thence across the river  
N. 76 E. 12 to Post  
formerly Iron wood

Land Warranted in the name  
of Peter Livengood

Situate on Casselmans river including the same in Elklick Town-  
ship Somerset County Containing twenty seven & one quarter acres  
& allowance surveyed the 29<sup>th</sup> day of May A.D. 1856 In pursu-  
ance of a warrant dated the 1<sup>st</sup> day of January A.D. 1856  
granted to the said Abraham P. Beachy for 25 as.

pr Martin Meyer Dep. Sur

To J. Porter Brawley Esq.  
Surveyor General.

IN TESTIMONY that the above is a copy of the original remaining on file in  
the Department of Internal Affairs of Pennsylvania, made  
conformably to an Act of Assembly approved the 16th day of  
February, 1833, I have hereunto set my Hand and caused  
the Seal of said Department to be affixed at Harrisburg,  
this eighteenth day of January 1904.

*James P. Brown*  
Secretary of Internal Affairs.